

Historic St Louis Preview: Wednesday - Thursday, December 14-15 from 10AM-4PM



Search Auctions/Lots

Enter the terms you wish to search for

Search

[Back to catalog](#)

← Lot 25
VICTOR S. HOLM (AMERICAN, 1876-1935) →



Estimate: \$6,000 - \$9,000

Starting Bid: **\$3,000** (0 Bids)

Your Max Bid

Leave Bid

[Request more information](#)

[Historic St Louis & Mississippi Valley](#)

December 16, 2022 10:00 AM CST Live Auction

St. Louis, MO, US

[Add to calendar](#)

[Register to Bid](#)



Additional

Description.

Victor S. Holm

American (Missouri), 1876-1935

Spirit of the Republic

Plaster maquette

This model purportedly the contest entry, and winner, for the Missouri State Memorial in Vicksburg, MS; in a "Lady Liberty" type, winged female form atop a prow-shaped plinth. This memorial is unique as the only state memorial on the battlefield dedicated to both sides of the Civil War.

Victor S. Holm was born in Copenhagen in 1876 and came to St. Louis, Missouri in 1909. He was on the staff of the School of Fine Arts at Washington University, the founder of the American Bronze Company and a Fellow of the National Sculpture Society. As a monumental sculptor he worked in marble, limestone and bronze, sculpting relief plaques and figural works. His works in St. Louis include the two bears at the St. Louis Civic Auditorium completed in 1933, the War Memorial at Washington University, a fountain in Forest Park, he designed the Henry Shaw gold medal for horticulture and more.

Dimensions:

21 x 10 3/4 x 9 1/4 in. (53.34 x 27.31 x 23.50 cm.)

Artist Name:

Victor S. Holm

Medium:



Plaster maquette

Payment & Shipping



Conditions Of Sale



Selkirk Auctioneers & Appraisers

555 Washington Avenue, Suite 129

Saint Louis MO 63101

T: 314.696.9041 F: 314.924.3911 E: info@selkirkauctions.com



-
- [Terms & Conditions](#)
 - [Privacy Policy](#)
 - [Sitemap](#)
 - [Powered by Invaluable](#)

© 2022 Selkirk Auctioneers & Appraisers. All Rights Reserved.



(1876-1935)





(, 1876-1935)





(1916-1935)





76-1935)





(, 1876-1935)





(, 1876-1935)





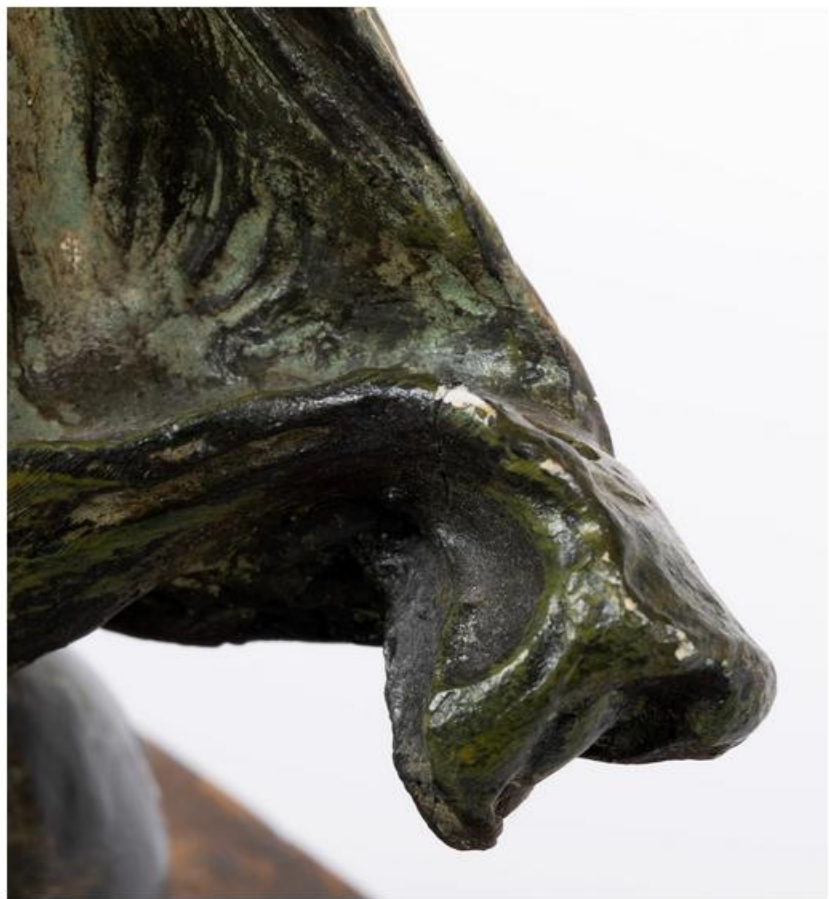
[, 1876-1935)





N, 1876-1935)





1876-1935)





1876-1935)

